

Cut and Paste Alphabet

Cut the letters out by cutting around the boxes and paste them in the correct order on the paste pages.

W w



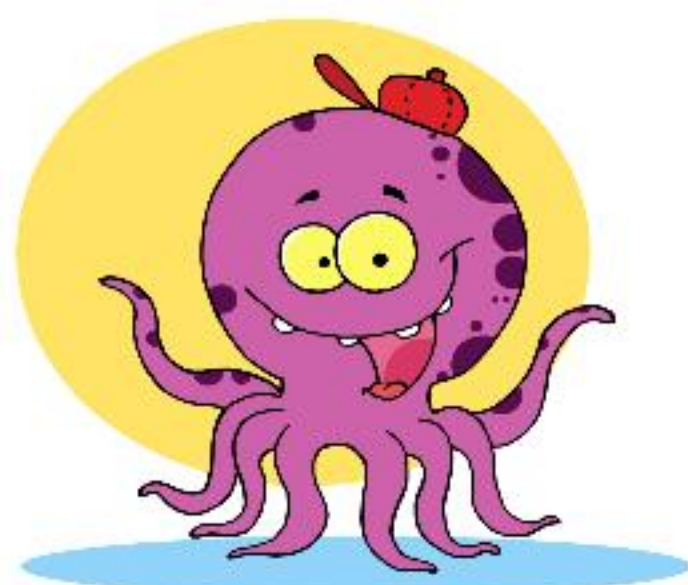
A a



G g



O o



X x



L l



E e



Z z



R r



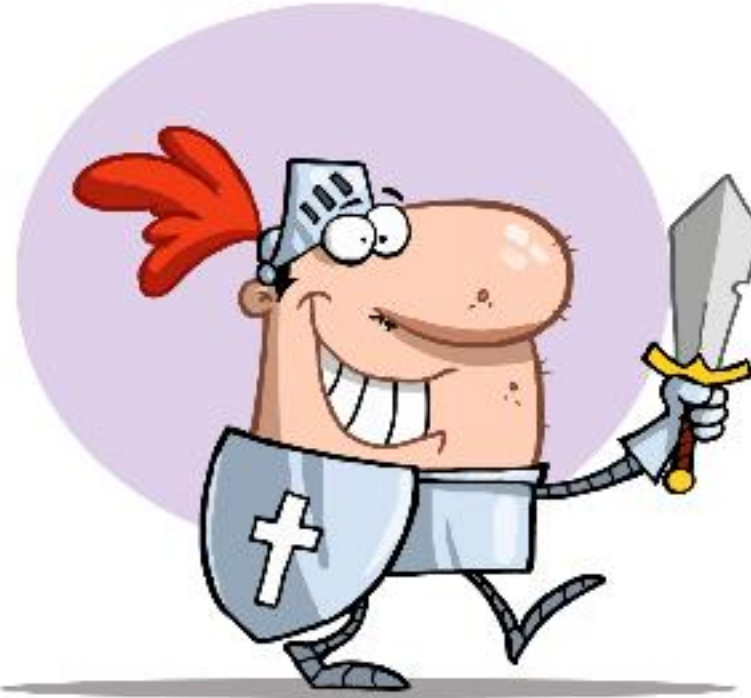
Cut and Paste Alphabet

Cut the letters out by cutting around the boxes and paste them in the correct order on the paste pages.

D d



K k



T t



Q q



H h



P p



I i



M m



C c



Cut and Paste Alphabet

Cut the letters out by cutting around the boxes and paste them in the correct order on the paste pages.

N n



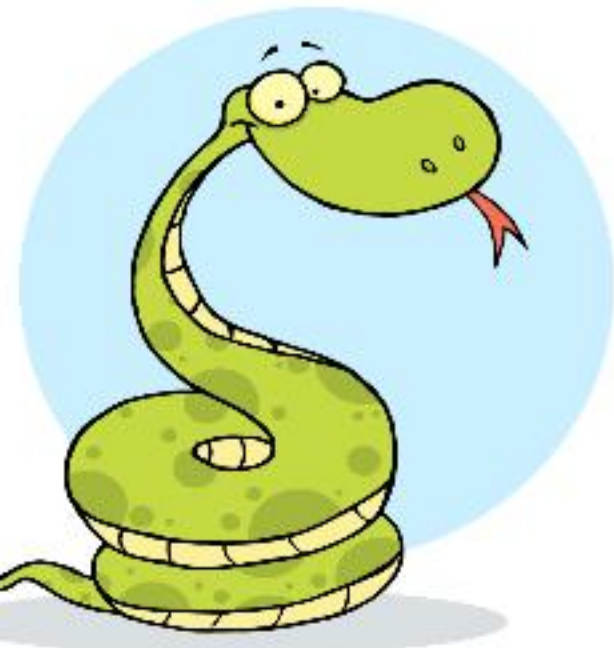
B b



U u



V v



Y y



F f



S s



J j



Cut and Paste Alphabet

Paste the letters from A to Z in the correct order in the boxes. Print this page three times.

