

Halloween Streamers

Instructions: Cut streamer circles. Cut string or fishing line for the length of the full streamer. Lay out how you will be placing the streamers (banners horizontal or vertical). Glue front and back pictures together with string between each (holds string). Hang in doorways, ceilings or along walls.

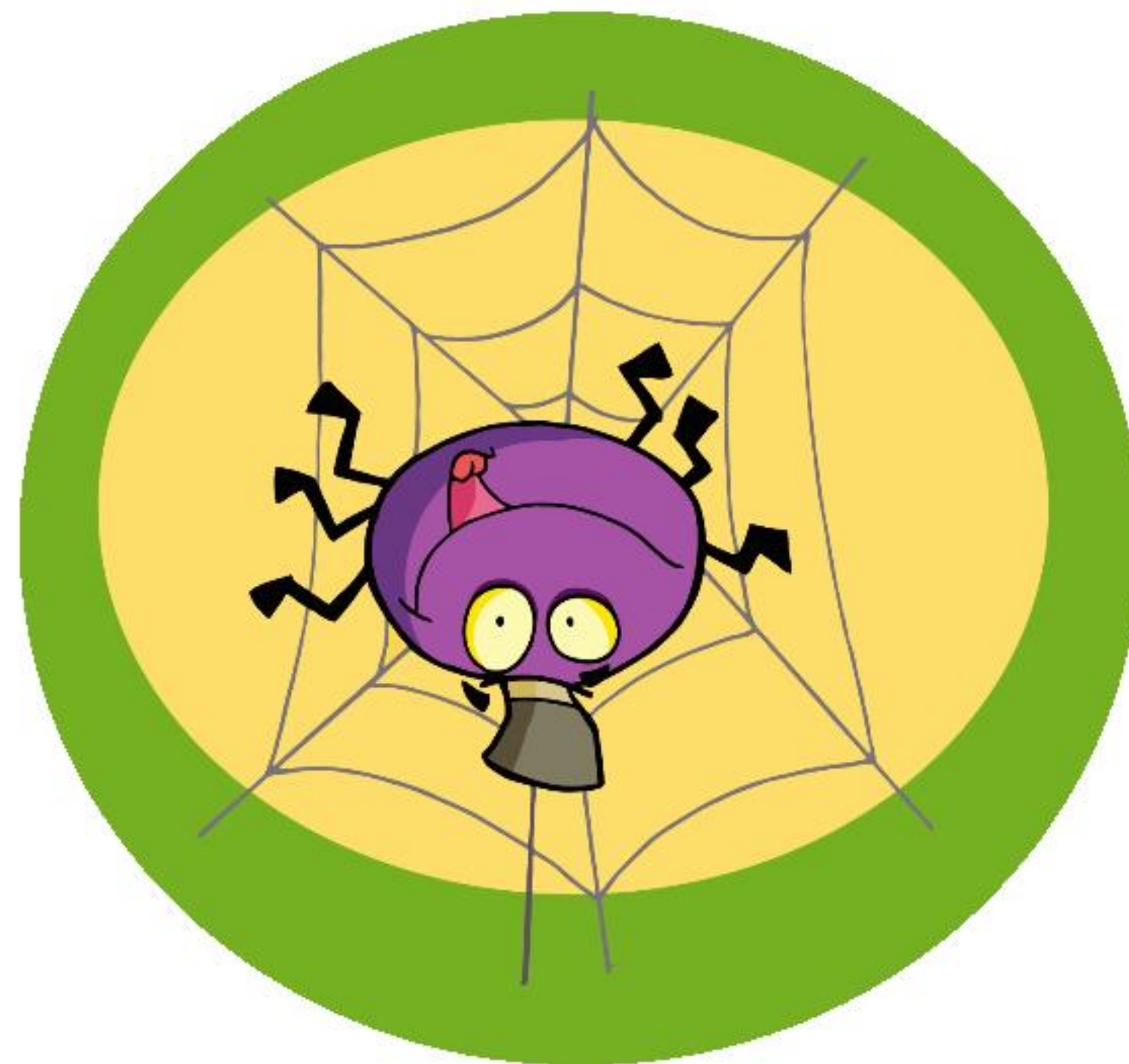
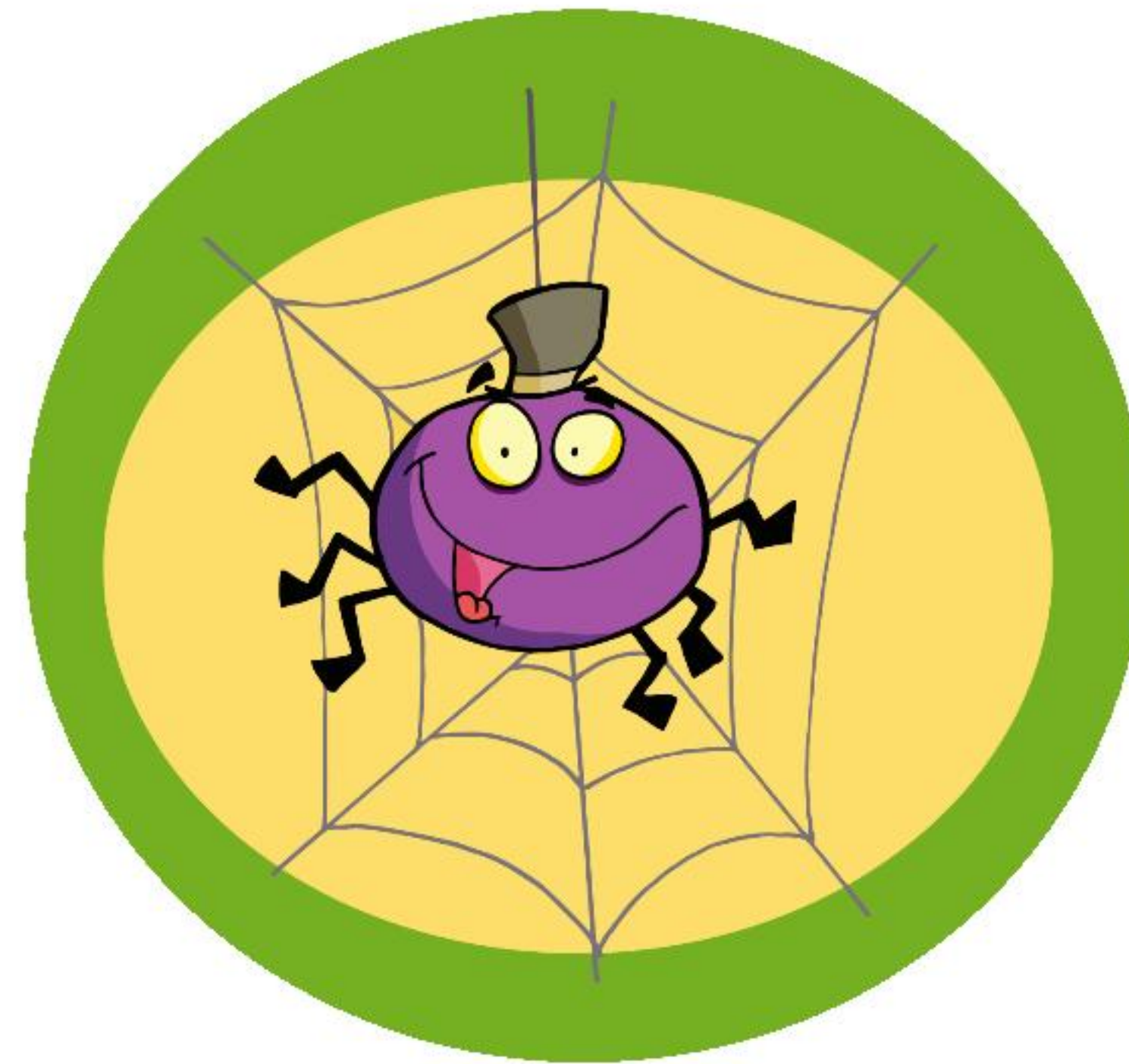
Front



Back

Halloween Streamers

Front



Back

Halloween Streamers

